

„This simple method will allow dental professionals to avoid unnecessary complications caused“

Dr. med. dent. Andreas Eichler

## implantlink® *semi Xray*

Dr. med. dent. Andreas Eichler  
DETAX©PresseService

### Radiopaque, semi-permanent implant cement, for securing suprastructures

We have been using products by DETAX GmbH & Co. KG for years, in particular **implantlink® semi Classic** and **implantlink® semi Forte**, for the temporary integration of superstructures. However, virtually all cements are faced with the problem that small amounts of residual cement can be overlooked when placing the individual constructions. Poor tissue healing and inflamed peri-implant tissue are the result. Colloquially also referred to a cementitis. In the worst case, this can lead to pronounced inflammation resulting in loss of the construction and the implant.

This raises the question of a cement which is visible on the X-ray image to avoid the mentioned problematic cases! DETAX offers such a cement in its portfolio with the new **implantlink® semi Xray**, which ensures ideal bonding properties, secure retention of the construction and visibility of excess after placement in the subsequent X-ray.

To confirm this benefit, we participated in a trial series with the new **implantlink® semi Xray**. In the following case we



Fig. 2 Integration of the superstructure

placed an implant-supported bridge in regio 34-36, leaving the residual cement in place on purpose. The residues in the distal region as well as between the implant-supported bridge crown can be seen clearly. The new **implantlink® semi Xray** thus permits clear visibility of the residual cement to avoid peri-implant inflammation.



Fig. 1 **implantlink semi Xray**

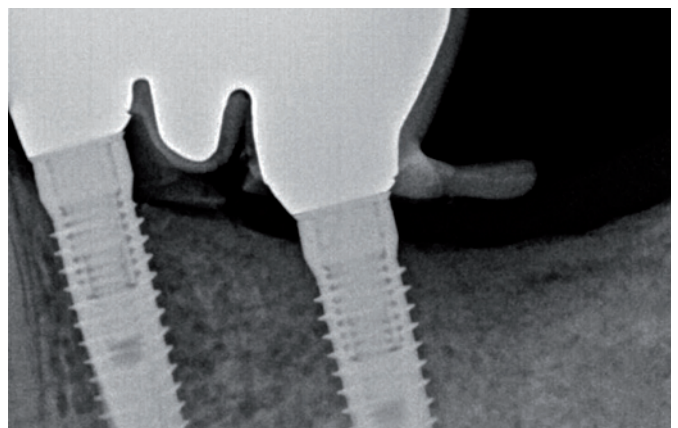


Fig. 3 X-ray with cement residues

Fig. 4 shows the removal of the cured cement residues which were removed with a scaler made of a glass-fibre reinforced special resin. It is of special benefit, that the removal of the material residues proves to be easy and effortless in whole, homogeneous pieces.



Fig. 4 Removal of the cement residues

After removal of all excess, Fig. 5 shows an absolutely clean and residue-free integrated superstructure.

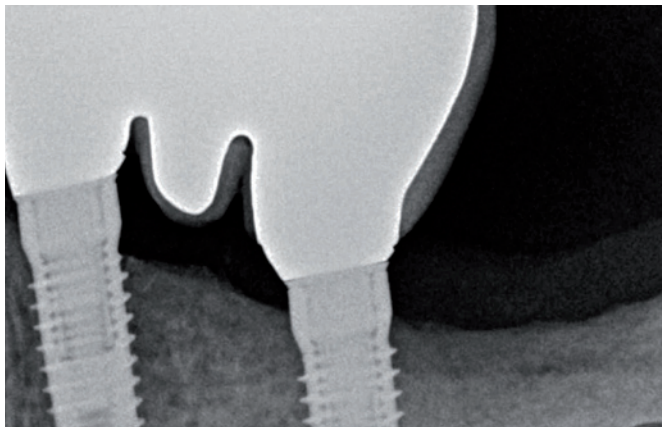


Fig. 5 X-ray without excess cement

## CONCLUSION

The bonding material **implantlink® semi Xray** by DETAX offers dentists greater security and control options in future for the integration of implant-supported superstructures. In future, this simple method will allow dental professionals to avoid unnecessary complications caused by undetected material residues. Thus we can recommend this material to interested colleagues and wish them every success in its application.



Dr. med. dent.  
Andreas Eichler  
Bahnhofstr. 21  
04720 Döbeln



# DETAX

GmbH & Co. KG  
Carl-Zeiss-Str. 4 · 76275 Ettlingen/Germany  
Telefon 07243/510-0 · Fax 07243/510-100  
www.detax.de · post@detax.de