

*Finally: secure retention, removal of restorations*

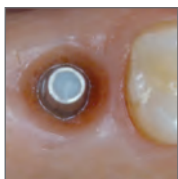
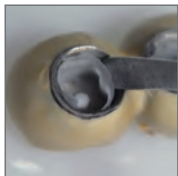
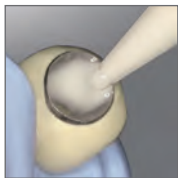
# without damage



"... excellent adhesive properties, a low layer thickness and high marginal tightness."\*

## implantlink® *semi*

**The first removable semi-permanent cement for implant restorations**



- interlocking, masticatory-stable cementing
- significantly lower displacement resistance than conventional cements
- extremely low layer thickness, only 8  $\mu$ m for maximum fitting accuracy
- ultimate marginal gap sealing through highly cross-linked, non-brittle polymer structure
- residues can be effortlessly removed (large pieces, no crumbling)
- damage-free removal of the restoration
- flexible processing times with the dual curing system
- compatible with all material combinations
- colour: natural opaque for screening metallic abutments
- antibacterial, eugenol-free, odourless & tasteless



\*Materials' sciences test with temporary cements  
(Dept. for dental propaedeutics/Community  
Dentistry, Center for ZMK ,Ernst-Moritz-Arndt-  
University Greifswald) 1/2009